

nxgn SIMULATIONS

NADI X

USER MANUAL

TABLE OF CONTENTS

Product Installation for Flight Simulator® 2004 (Automatic) 3

Product Installation for Flight Simulator® 2004 (Manual) 7

Technical Support & Update Notifications 14

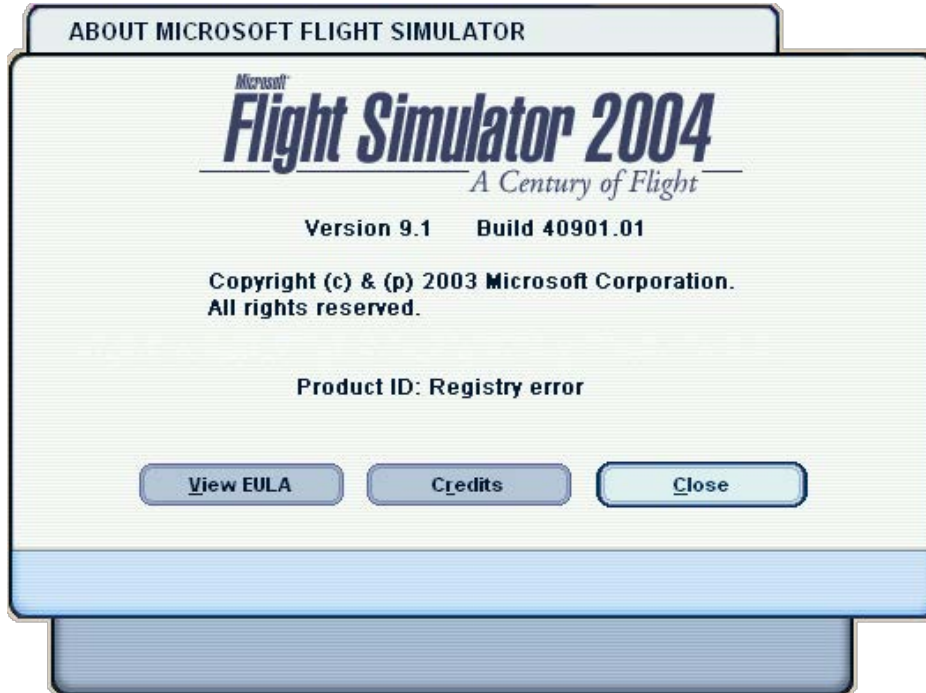
Information About The Real Airport 14

Frequent Answers & Questions 14

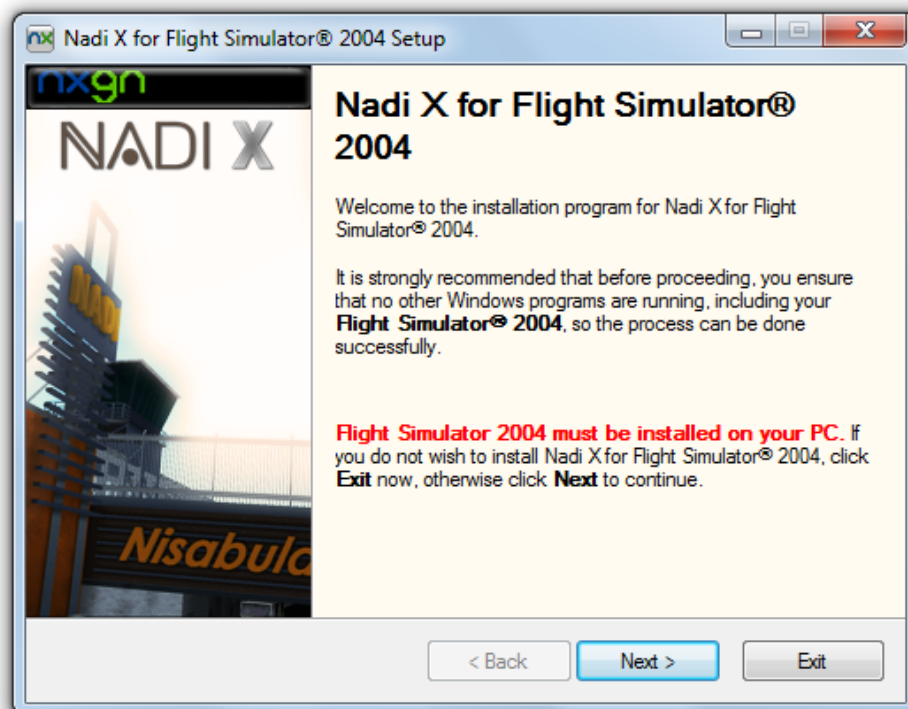
Credits 15

Product Installation for Flight Simulator® 2004 (Automatic)

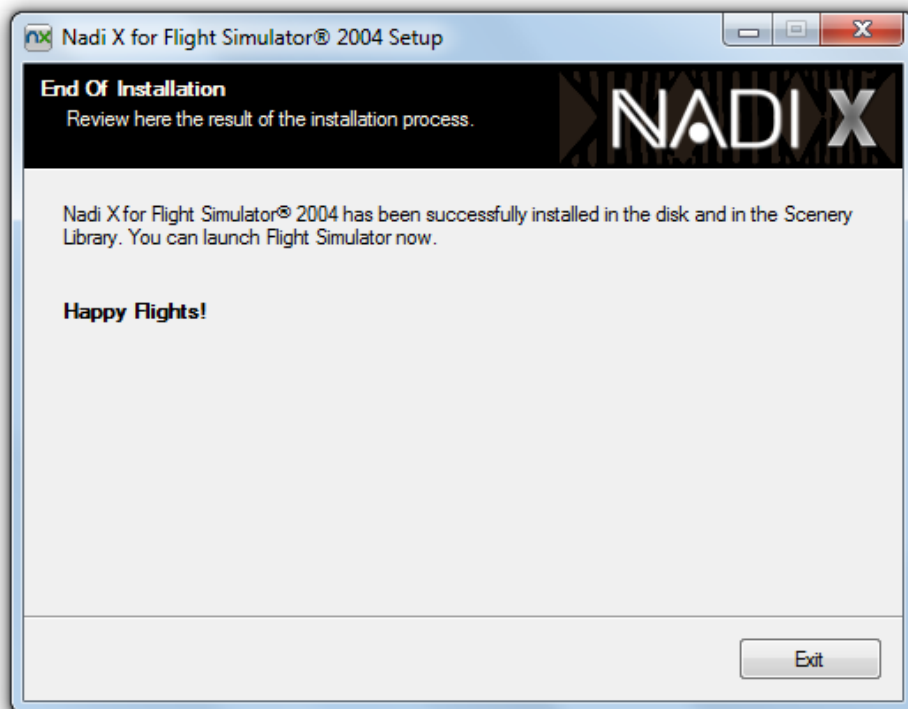
1. Before you proceed with the installation of Nadi X, verify that your copy of Microsoft® Flight Simulator® 2004: A Century Of Flight is correctly installed and working. Then check that you have installed version 9.1, by clicking 'Help > About Microsoft Flight Simulator...' in simulation. If not, download the update here: <http://www.microsoft.com/en-us/download/details.aspx?id=9727>.



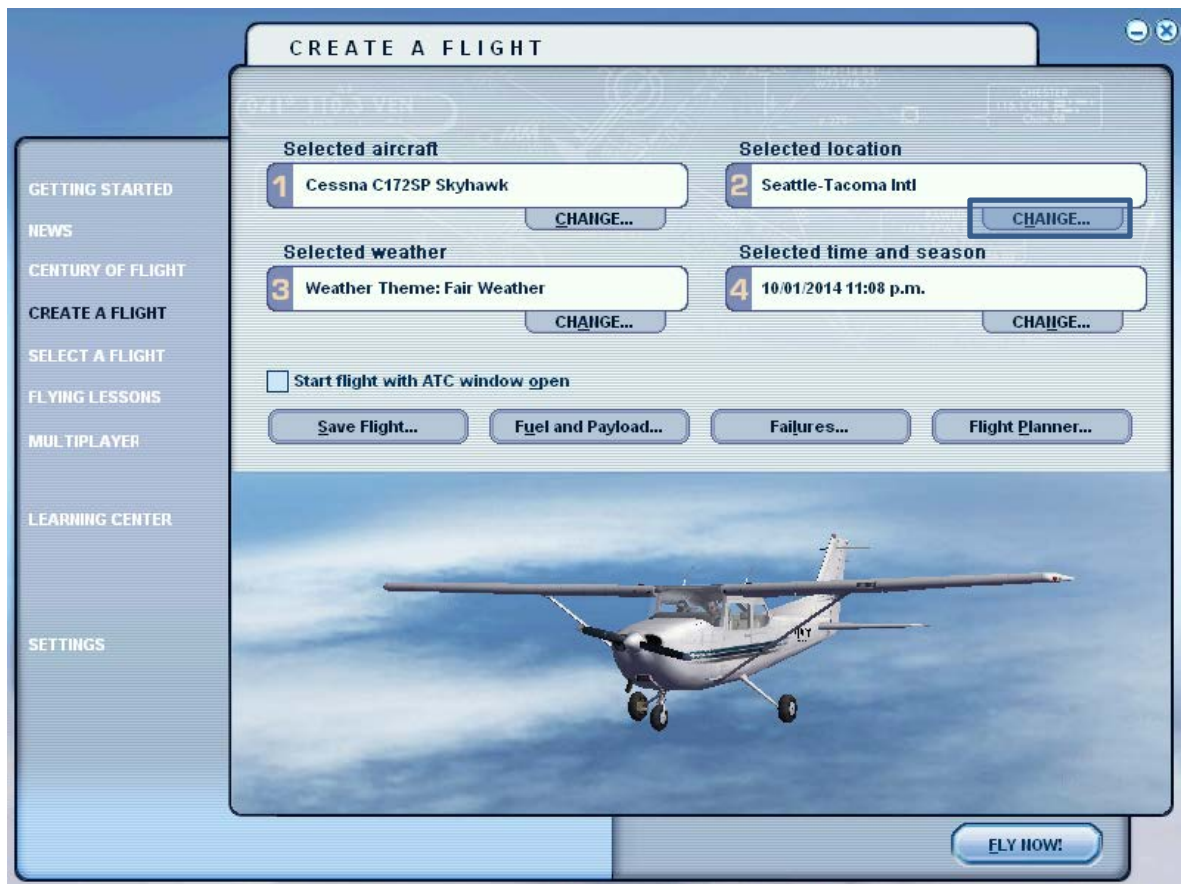
2. After that, run the file `NffnX_Fs2004.exe`. If you are installing under Windows Vista, Windows 7, Windows 8 or Windows 8.1, be sure to run **as administrator**.



3. Follow the instructions on the screen until you complete the installation.
NOTE: Select the directory of your Flight Simulator 2004 only if the given one from Windows Registry is wrong. Otherwise, continue installation.
4. Wait until all files are copied and finally, your scenery will be automatically exposed into Scenery Library so you can start enjoying your scenery out of the box.



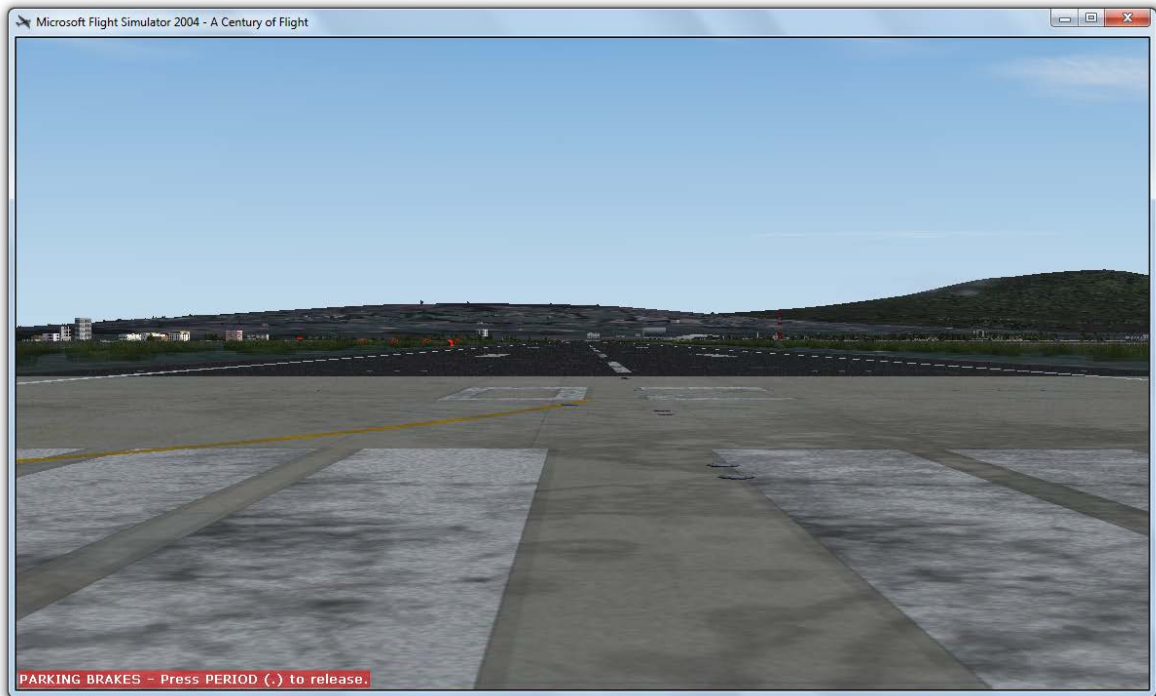
- Once installer finished all steps, exit Setup and run Flight Simulator. After launch, start your flight like this:
First click on Change Selected Location on CREATE A FLIGHT screen, or 'World > Go to Airport...' menu in simulation.



Then type NFFN on airport ID, and finally select your desired start position.



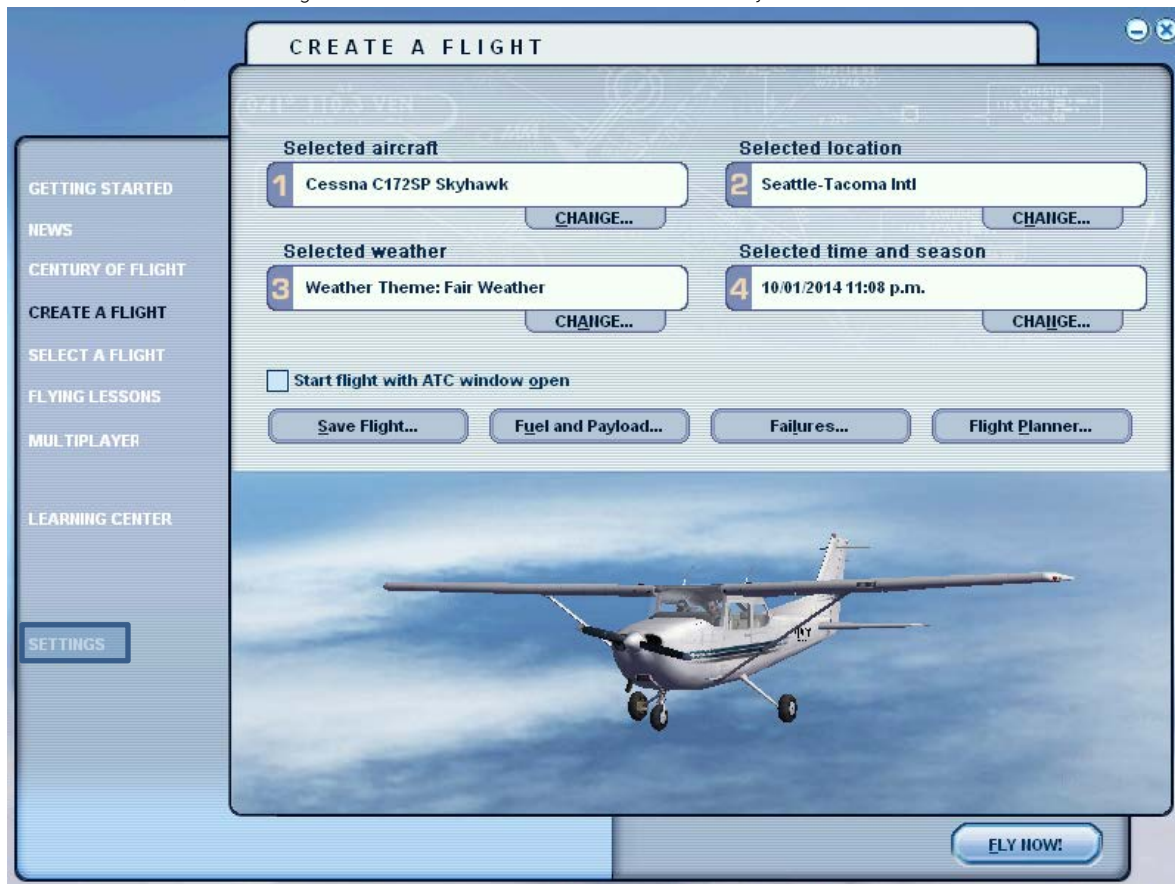
Finally, you will have something like this...

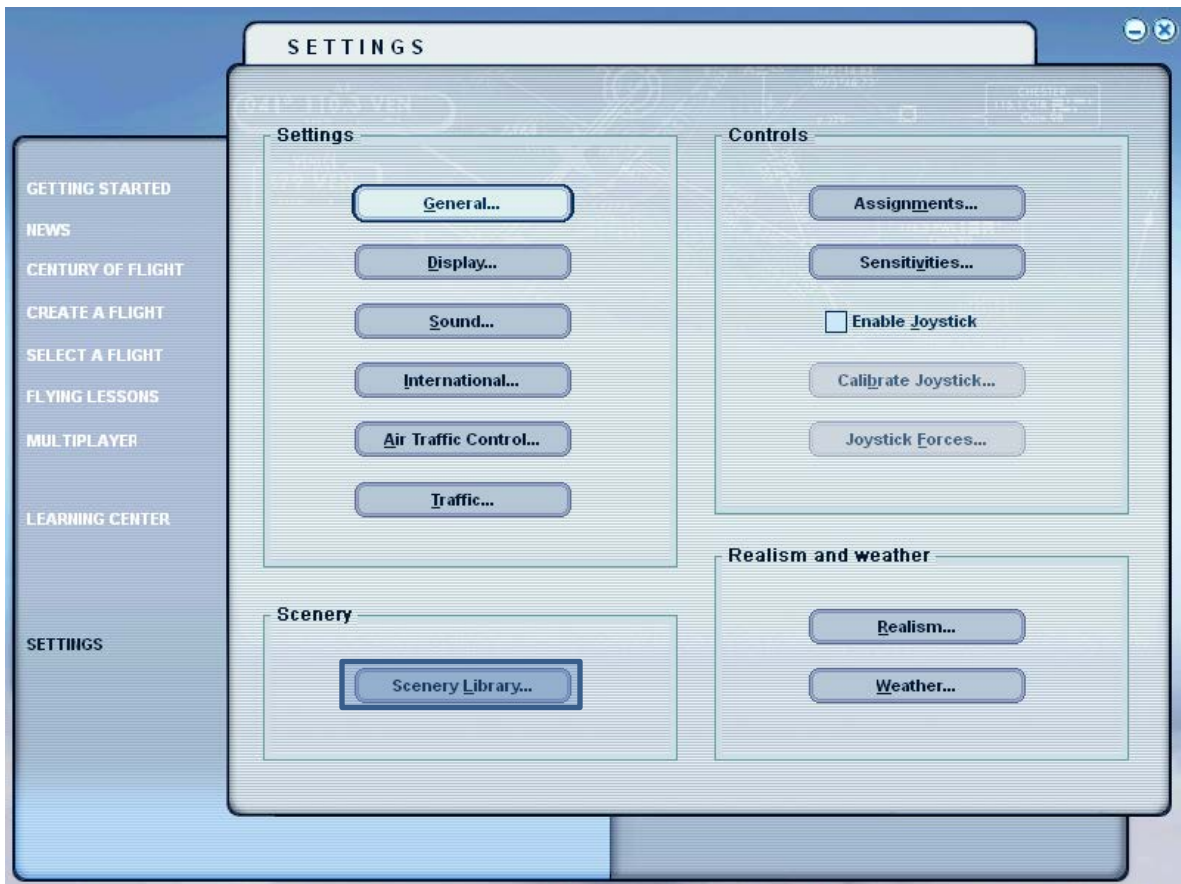


Product Installation for Flight Simulator® 2004 (Manual)

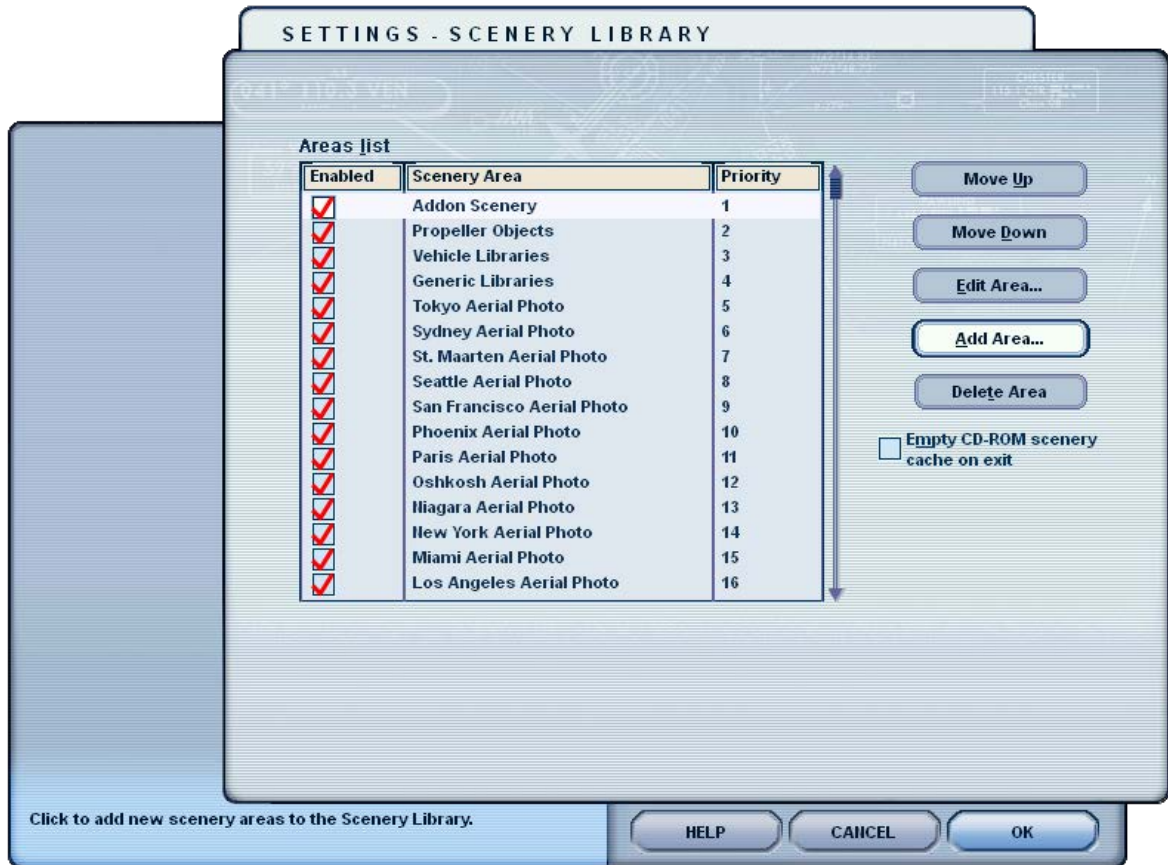
If the installation was successfully done but the scenery is not exposed on Scenery Library after installation (that can happen), follow carefully these steps:

1. After installation, launch Flight Simulator. Then click **SETTINGS**. Finally click **SCENERY > SCENERY LIBRARY**.

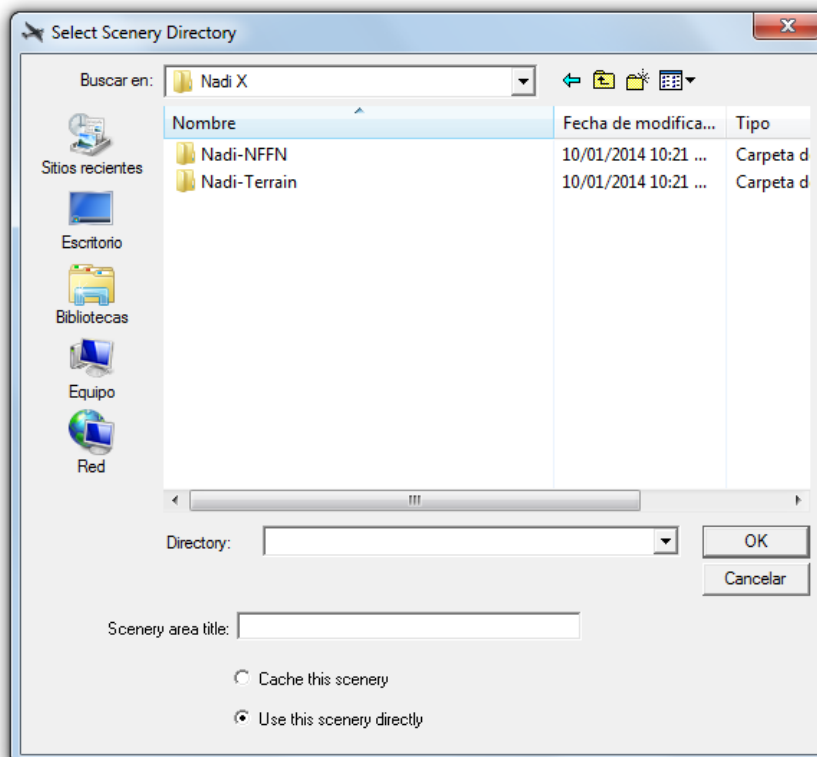




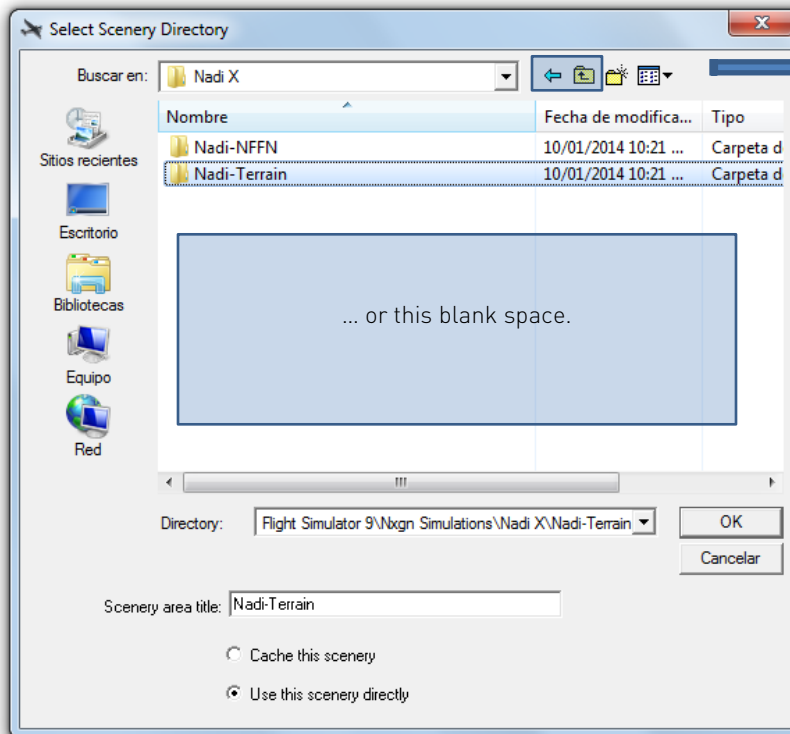
- Once you get inside Scenery Library screen, click **ADD AREA**.



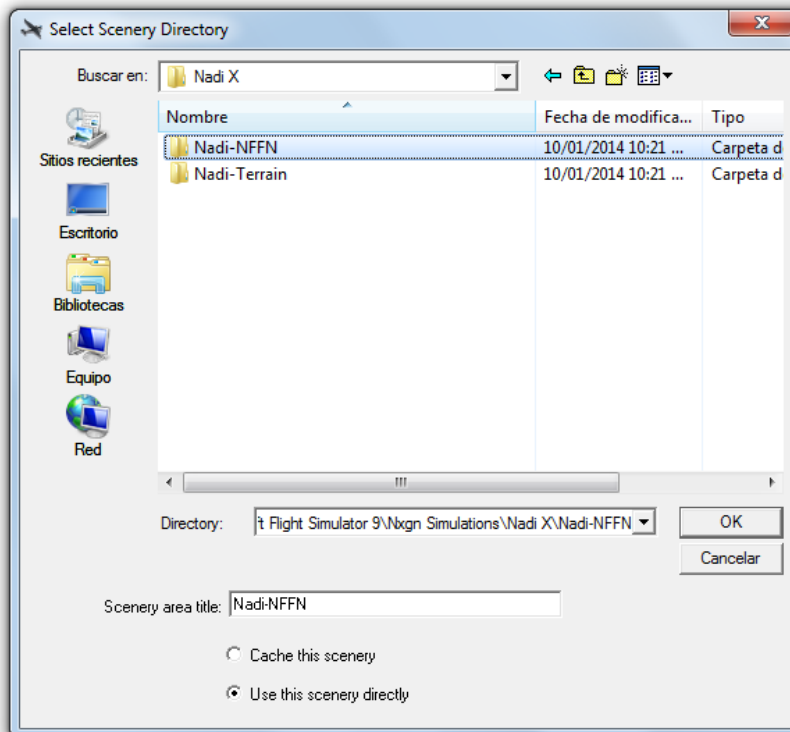
- Locate the installation folder <FS2004 Path>\Nxgn Simulations\Nadi X



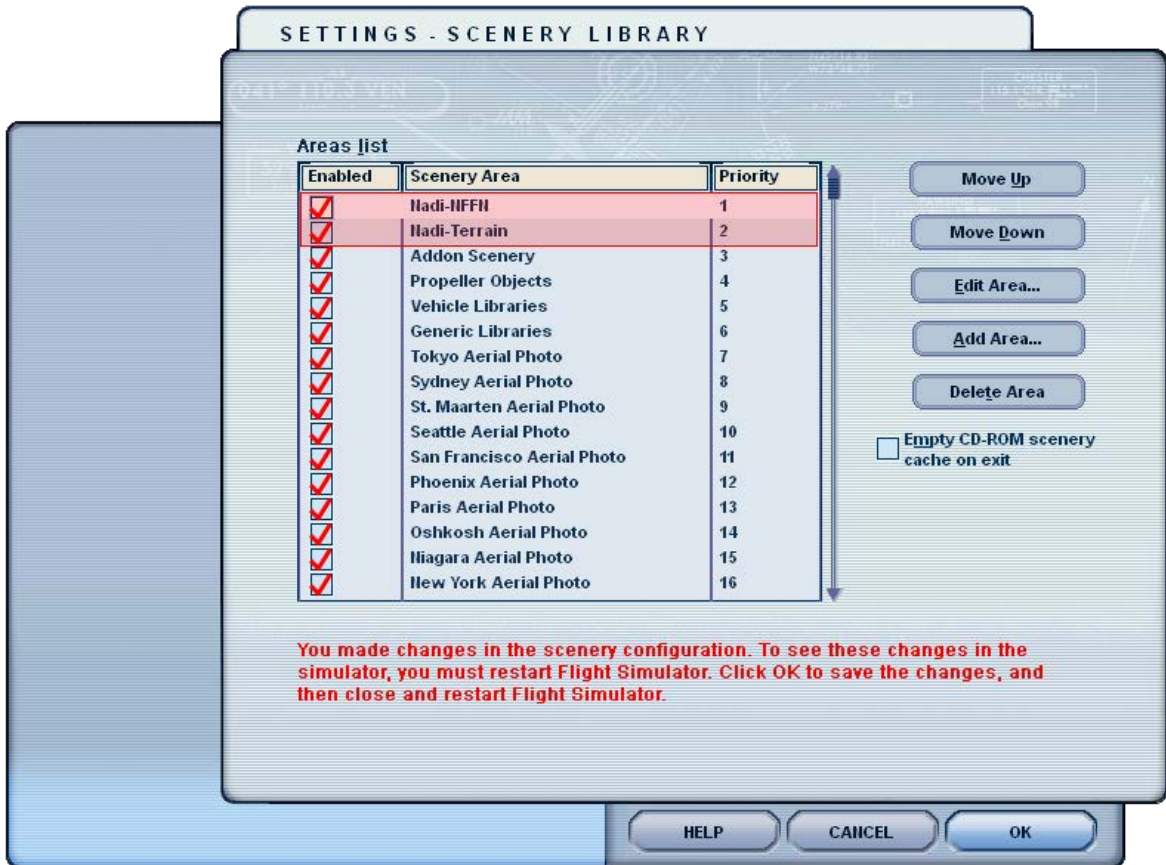
4. So, you see two folders: the first one is the base scenery and the other one is the mesh terrain. First add the mesh terrain layer: click **Nadi-Terrain**, then click OK. If FS2004 is running in Windows Vista, Windows 7, Windows 8 or Windows 8.1, click the white area or click **Back** button or **Up** button.



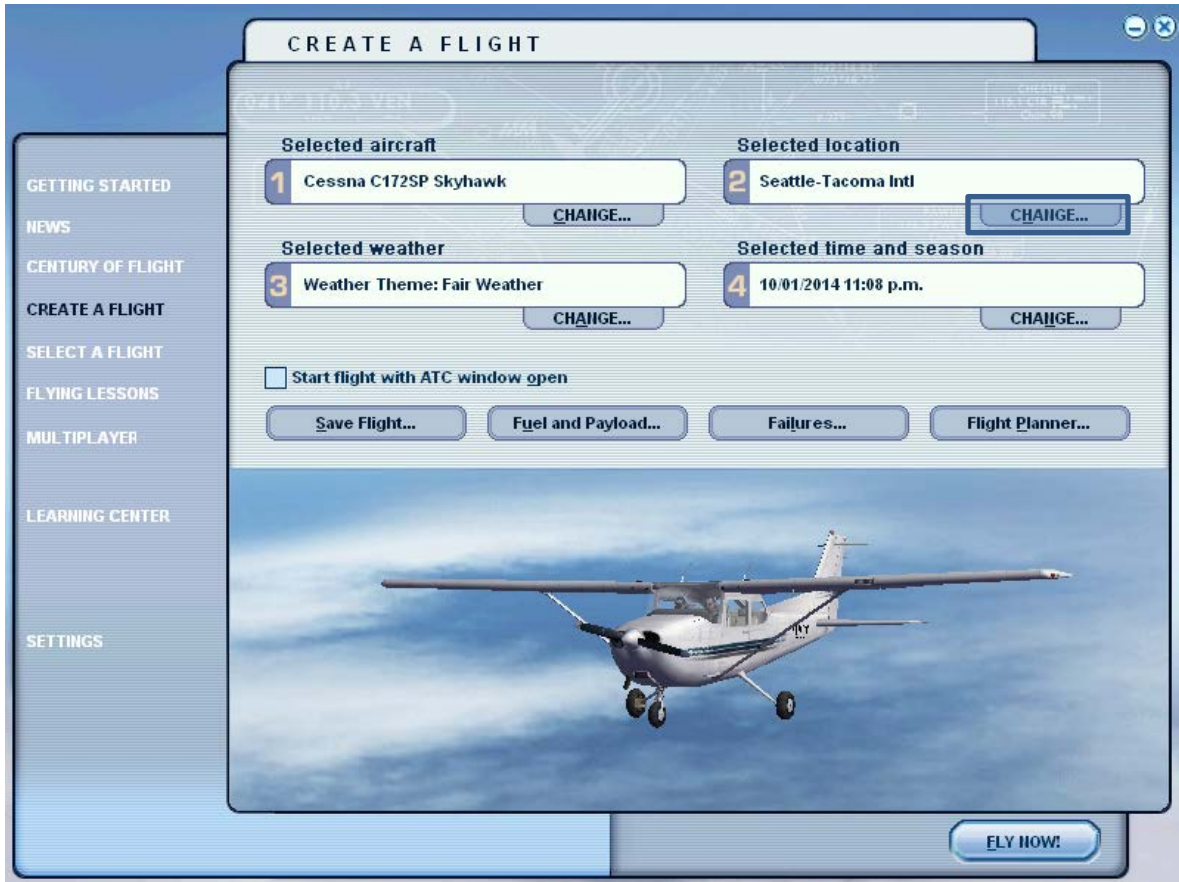
Finally add the base scenery layer...



5. Once you have added these layers on the correct order, you will have something like this...



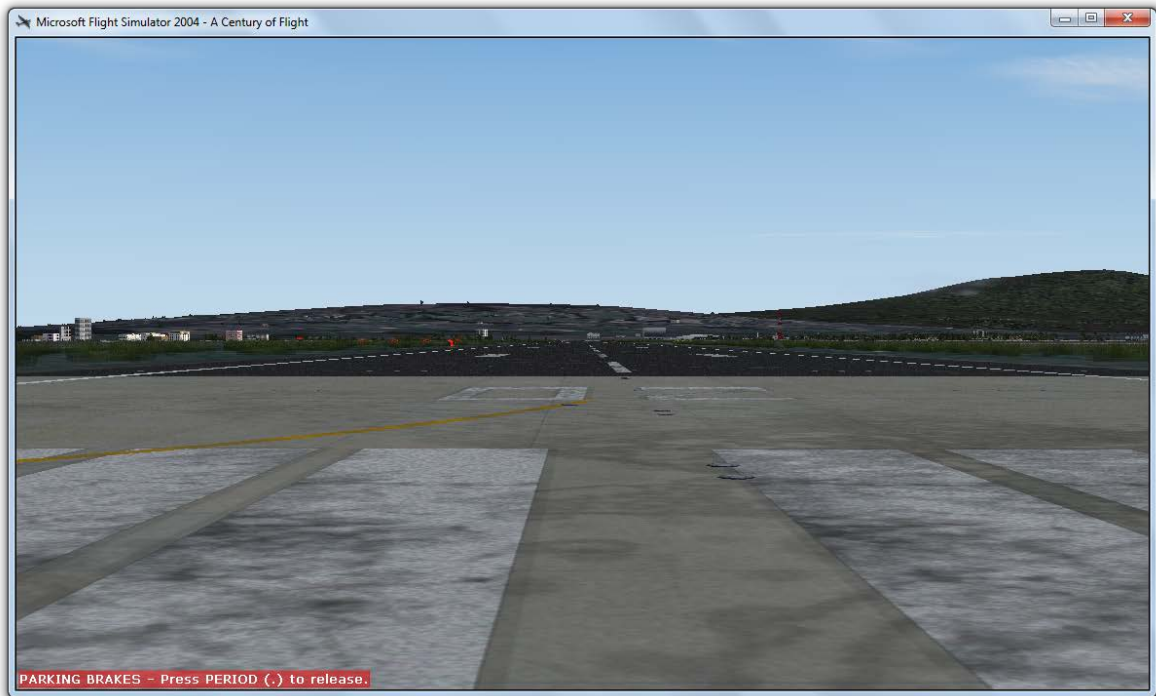
6. Click **OK**. Then restart Flight Simulator and click **Change Selected Location** on the **CREATE A FLIGHT** screen.



7. Then type NFFN on airport ID, and finally select your desired start position.



8. Finally, you will have something like this...



Technical Support & Update Notifications

In order to get technical support for this and other products, you can send an email to flightsim.airports@gmail.com, or post a comment on the latest post inside Facebook Fan Page: facebook.com/nxgnsim. A Twitter fan page will be opened soon.

Information About The Real Airport

For more information about Nadi International Airport, please refer to the following websites:
http://www.airportsfiji.com/nadi_aiport.php or http://en.wikipedia.org/wiki/Nadi_International_Airport

Frequent Answers & Questions

The following information is known of common issues that may occur and the known solution:

Q: I installed the product but there are no buildings/default buildings.

A: You may have disabled the scenery layers or the automatic installation failed. If so, check your Scenery Library and enable the scenery layers or follow the Manual Installation Guide (returning to the first part of this document).

If you did that steps and the problem persists, another possible cause may be due to the scenery complexity level. Please verify that scenery complexity is equal or greater than NORMAL. For that, go to SETTINGS > DISPLAY, and move the Scenery Complexity slider to NORMAL or above.

This will only display the details of the floor but not the terminal. If everything else was checked but the problem persists, verify that the installation was successful (this can be checked if Setup throws an error and the message is given). Please fix the corresponding errors based on the error message.

If you have a 64-bit operating system or you are not the system administrator, it is possible that some files had not been installed properly. Run Setup as administrator to avoid any installation issue.

Q: I installed the product but the old (default) buildings still appear over the scenery.

A: You may have disabled the scenery layers or the automatic installation failed. If so, check your Scenery Library and enable the scenery layers or follow the Manual Installation Guide (returning to the first part of this document).

If you did that steps and the problem persists, another possible cause may be due to the scenery complexity level. Please verify that scenery complexity is equal or greater than NORMAL. For that, go to SETTINGS > DISPLAY, and move the Scenery Complexity slider to NORMAL or above.

But if the problem is the mix between the old buildings and the new buildings, please do the following: First remove or rename the following file <FS2004 Path>\Scenery\Ocen\scenery\AP995380.BGL, finally reinstall this product.

Q: I cannot register the product in the Scenery Library because FS does not let me add the scenery layers.

*A: If the operating system you are using is Windows Vista, Windows 7, Windows 8 or Windows 8.1, you may not have the appropriate permissions to do the operation, probably because your FS installation path is inside **Program Files** folder or **Program Files (x86)** folder.*

*If so, please do the following: Open Windows Explorer and locate your FS root folder, then right-click the folder and click **Properties** in the contextual menu. Then go to **Security** tab and click **Edit...** If UAC popup dialog is shown, click **Continue** or type Administrator password. Finally, check **Allow / Full Control** for each user or group and click **OK**. Repeat the first part steps.*

Credits

This product including all files contained within this package is copyright © of Nxgn Simulations. The information provided within this document and the Nadi X scenery package is not intended for real world navigation. All trademarks and/or logos mentioned and/or displayed within this scenery package are property of their respective holders and are being used solely with the purpose of representing reality. Installer developed with Clickteam's Install Creator.